



SOFTING IT NETWORKS

Industrial Accessories Catalog



IT Networks

The WireXpert Series

WireXpert Series

From now on, you have the choice between three WireXpert 500 variants to find the version that fits best to your field of work: Softing IT Networks offers a CAT 6A/Class E_A copper certification tester, a fiber-only certification tester or a combined CAT 6A/Class E_A copper and fiber certification tester. All models can be upgraded, eliminating the need to buy a new certification tester when your requirements change. The WireXpert 4500 premium model supports certifications up to 2500 MHz based on the latest CAT 8, Class I & II draft standard.

WireXpert 500

Certifies copper cabling up to 500 MHz compliant with the applicable CAT 5e/Class D, CAT 6/Class E, CAT 6A/Class E_A standards. In addition to building cabling, Industrial Ethernet RJ45 and M12 D-coded and X-coded cabling systems, coaxial cabling and patch cords can be measured. The certifier exceeds the Level III accuracy requirements defined by ISO and TIA and displays the test results within seconds due to extremely short measuring times with the integrated autotest feature. Also available as a fiber version.

WireXpert 500plus

Is the technologically advanced combination model for copper testing up to 500 MHz according to the standards' CAT 5e/Class D, CAT 6 /Class E, CAT 6A/Class E_A requirements and for fiber optic multimode and singlemode testing (850/1300 nm and 1310/1550 nm). WireXpert 4500 and WireXpert 500-PLUS are the only certification testers that support test requirements of data centers, of building cabling and Industrial Ethernet. WireXpert 500-PLUS is compatible with all adapters and can be upgraded to 2500 MHz in support of CAT 8, Class I & II measurements.

WireXpert 4500

Enables certification of the highest performance cabling systems in enterprise networks or data centers. An extremely fast measurement technology and an intuitive device operation ensure highly accurate and fast certification measurements. WireXpert 4500 is the only cable certifier of its class that is able and ready today to perform certification testing in compliance with cabling standards such as CAT 8 and ISO Class I & II.



WireXpert

preLink® System for M12 and RJ45 End-to-End Cabling Links

The Harting preLink® system allows for a quick and easy adaptation of the most various connector systems for Industrial Ethernet applications such as Profinet to the WireXpert family.

Only a single measurement adapter is required for the WireXpert family. All connector systems supported by Harting preLink® can be connected to the WireXpert using this measurement adapter with the appropriate test cord and preLink® interface.

Order No.	Product Description
228179	End-to-End (E2E) adapter with TERA interface for testing Industrial Ethernet cabling such as Profinet (1 pc)
228153	E2E test cord TERA to Harting preLink® system (1 pc)
228080	CAT 7A/Class F _A reference cord (2 m) with TERA interface for reference setting (1 pc)
228154	Interchangeable RJ45 plug for Harting preLink® CAT 6A/Class E _A system, IP20 (1 pc)
228155	M12 D-coded plug for Harting preLink® CAT 5/Class D system (1 pc)
228156	M12 X-coded plug for Harting preLink® CAT 6A/Class E _A system (1 pc)
228157	M12 D-coded jack for Harting preLink® CAT 5/Class D system (1 pc)
228158	M12 X-coded jack for Harting preLink® CAT 6A/Class E _A system (1 pc)
228159	Interchangeable V14 push-pull RJ45 plug for Harting preLink® system (1 pc)
228160	Interchangeable Han® 3 A RJ45 plug for Harting preLink® system (1 pc)
228161	Release tool for Harting preLink® systems (5 pcs)
228162	preLink® RJ45 jack with CAT 6, HIFF-format for Harting preLink® system, without cable termination block (1 pc)
228171	Pouch for WireXpert accessories. Compartments for 2 WireXpert adapters, small parts and test cords
228172	1x test cord (2 m) with TERA and RJ45 jack for measurements on E2E and Profinet links with RJ45 plugs, consisting of 1x <228153>, 1x <228162>
228173	1x test cord (2 m) with TERA and M12 D-coded jack for measurements on E2E and Profinet links with M12 D-coded connectors
228174	1x test cord (2 m) with TERA and M12 D-coded connectors for measurements on E2E and Profinet links with M12 D-coded jacks
228175	1x test cord (2 m) with TERA and M12 X-coded jack for measurements on E2E and Profinet links with M12 X-coded connectors
228176	1x test cord (2 m) with TERA and M12 X-coded connector for measurements on E2E and Profinet links with M12 X-coded jacks
228163	M12 D-coded test cord kit, contains 1x <228080> reference cord, 2x <228153> test cord TERA to Harting preLink®, 2x <228155> M12 D-coded connector, 2x <228157> M12 D-coded jack. Please note: Set does not contain WireXpert E2E adapters
228164	M12 X-coded test cord kit, contains 1x <228080> reference cord, 2x <228153> test cord TERA to Harting preLink®, 2x <228156> M12 X-coded connector, 2x M12 <228158> X-coded jack. Please note: Set does not contain WireXpert E2E adapters
228165	Harting RJ45 HAN® 3 A test cord kit, contains 1x <228080> reference cord, 2x <228153> test cord TERA to Harting preLink®, 2x HAN® 3 A connector. Please note: Set does not contain WireXpert E2E adapters
228166	Harting RJ45 V14 test cord kit, contains 1x <228080> reference cord, 2x <228153> test cord TERA to Harting preLink®, 2x <228159> RJ45 V14 push-pull connector. Please note: Set does not contain WireXpert E2E adapters



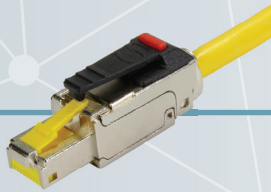
Order No.: 228179



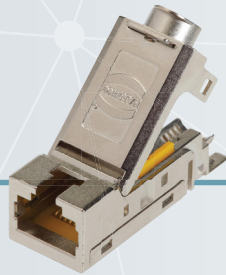
Order No.: 228153



Order No.: 228154



Order No.: 228162



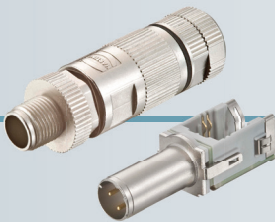
Order No.: 228159



Order No.: 228160



Order No.: 228155



Order No.: 228157



Order No.: 228156



Order No.: 228158



TEST CORD KITS

The test cord kits always contain a reference cord and two TERA to preLink® test cords (2 m) and the respective measurement heads

TEST CORD KITS

▶ 228163 M12 D-coded

The M12 D-coded test cord kit contains all test cords required to measure M12 D-coded systems with connectors or jacks.



▶ 228164 M12 X-coded

The M12 X-coded test cord kit contains all test cords required to measure M12 X-coded systems with connectors or jacks.





▶ **228165 RJ45 V14**

The RJ45 V14 test cord kit contains all test cords required to measure RJ45 cabling systems with jacks.



▶ **228166 RJ45 HIFF**

The RJ45 HIFF test cord kit contains all test cords required to measure RJ45 HIFF systems with jacks.



Additional Test Cords

The products described on the following pages consist of test cords with measurement heads that are not interchangeable.

Order No.	Product Description
228169	1x test cord (2 m) with TERA and M8 jack for measurements on E2E links with M8 D-coded connectors
228170	1x test cord (2 m) with TERA and IX jack for measurements on E2E links with IX connectors
228177	M8 test cord kit, contains 1x <228080> reference cord, 2x <228169> test cord TERA to M8 D-coded jack. Please note: Set does not contain WireXpert E2E adapters
228178	Harting IX test cord kit, contains 1x <228080> reference cord, 2x <228170> test cord TERA to Harting IX jack. Please note: Set does not contain WireXpert E2E adapters

Order No.: 228179



Order No.: 228169



Order No.: 228170





TEST CORD KITS

▶ 228177



x2

▶ 228178



x2

optimize!
softing

NORTH AMERICA & CANADA

Softing Inc.

Knoxville, Tennessee

USA

Phone: +1.865.251.5252

E-mail: sales@softing.us

itnetworks.softing.com/us/

GERMANY

Softing IT Networks GmbH

Richard-Reitzner-Allee 6

85540 Haar

E-Mail: info.itnetworks@softing.com

itnetworks.softing.com

